

Hailei

Home ESS-HV Series

High Voltage Stacked Home Energy Storage System

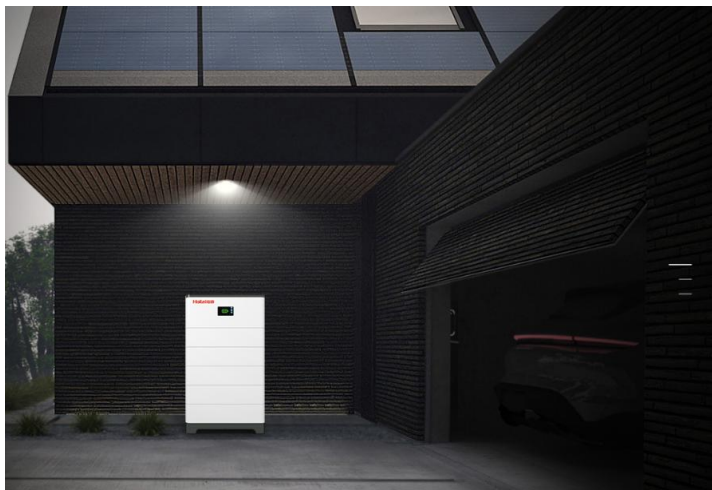


CB C E UN38.3

MSDS
Material Safety Data Sheet

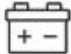


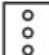


DESCRIPTION

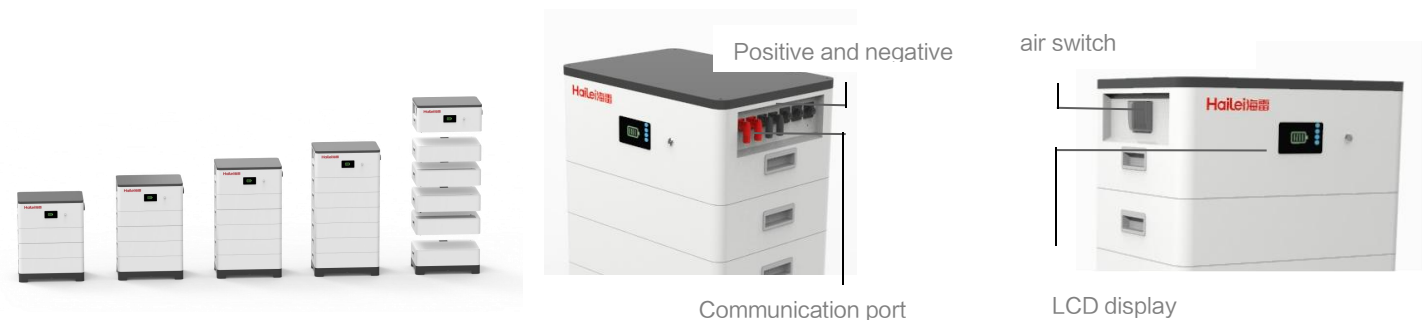


Home energy storage system, modular high-voltage battery, suitable for residential energy storage, one set to solve the electricity consumption of the whole house.

FEATURES

	<p>Using safe lithium iron phosphate square battery as the main body of energy storage, with feature of large capacity, light weight, large power;</p>		<p>Modular structure, can form a small combination of various energy levels, easy maintenance, plug and play;</p>
	<p>Modular design for fast transportation and easy installation</p>		<p>LED lights display the parameters of the equipment in real time, and the running status is clear at a glance;</p>

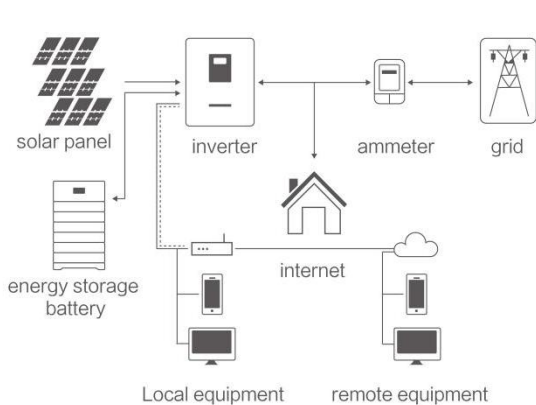
- It can match to main hybrid inverter in the market, easy to use
- With functions of over charge and discharge protection, power supply monitoring and low power alarm;
- The maximum capacity of a single cluster is 20.48kWh, and it supports 16 clusters in parallel



PARAMETER

Basic Parameters	3-module	4-module	5-module	6-module
Nominal Capacity(KWh)	7.68	10.24	12.8	15.36
Cell Matching	48S1P	64S1P	80S1P	96S1P
Working Voltage Range(V)	136.8-172.81	182.4-230.4	228-288	273.6-345.6
Weight (kg)	115	145	175	205
Nominal voltage(V)	153.6	204.8	256.0	307.2
Dimension (WxDxH) (mm)	550x430 x697.5	550x430 x826.5	550x430 x955.5	550x430 x1084.5
Battery Type	LFP(LiFePO4)			
Nominal Working Current	50			
Communication Port	CAN/RS485			
Working Temperature Range	Charge:0-45°C/Discharge:-10-50°C			
Waterproof	IP55			
Installation Method	Floor-standing			
Cycle Life	>6000, 25°C/77°F, 80%DOD			
Peak charge/discharge current(@25°C,5S)	63A			
Discharge rate of Module	≤3.5%/month/@25°C			
Module Series connection/Module	3S~6S			
Parallel connection	4 units in parallel			

APPLICATION



Basic Parameters	3-module	4-module	5-module	6-module
Nominal Capacity(KWh)	7.68	10.24	12.8	15.36
Cell Matching	48S1P	64S1P	80S1P	96S1P
Working Voltage Range(V)	136.8-172.81	182.4-230.4	228-288	273.6-345.6
Weight (kg)	115	145	175	205
Nominal voltage(V)	153.6	204.8	256.0	307.2
Dimension (WxDxH) (mm)	550x430 x697.5	550x430 x826.5	550x430 x955.5	550x430 x1084.5
Battery Type	LFP(LiFePO4)			
Nominal Working Current	50			
Communication Port	CAN/RS485			
Working Temperature Range	Charge:0-45°C/Discharge:-10-50°C			
Waterproof	IP55			
Installation Method	Floor-standing			
Cycle Life	>6000, 25°C/77°F, 80%DOD			
Peak charge/discharge current(@25°C,5S)	63A			
Discharge rate of Module	≤3.5%/month/@25°C			
Module Series connection/Module	3S~6S			
Parallel connection	4 units in parallel			